



# Hoofbeats

## Tidbits from the Prez

## Capitol Riders

Volume 3, Issue 11

February 2007

### Inside this issue:

<i>Prices Increasing to Visit America the Beautiful</i>	2
<i>Barry and Arthur</i>	3
<i>Classified Advertising Rates</i>	4
<i>Horse Trailer Safety</i>	5
<i>Emergency Preparedness; Important Tips for Horse Owners</i>	5
<i>Your Editor had a Moment</i>	5
<i>Bio: Rosalie Blue</i>	6
<i>Ridin' the Storm Out; December 14, 2006</i>	7
<i>2007 Ride / Activity Schedule</i>	8
<i>Public Land Managers Meeting; 12/01/06</i>	10
<i>Minutes from 01/09/07 Meeting</i>	11
<i>The Olympian Headline for 12/15/06</i>	12
<i>BCHW Legislative Day; 02/08/07</i>	12
<i>Request from Your Director</i>	12
<i>Directors' Board Meeting; 12/02/06</i>	13
<i>Cle Elum Horse Park Funds Earmarked for 2007</i>	14
<i>2006 Volunteer Hours Wrap up</i>	15
<i>Winter Weather—What About the Horse?</i>	15



Acting President (**Gary Thorson**—right) handing off the gavel to Incoming President, **Eric Anderson**

and wonderful participation in the Committees already, where I am seeing a lot of thought and vision. Here are some new and exciting activities being planned for this year: 1 or 2 Retirement parties, social

And with the Littlerock Fire Station as our new meeting place, we will be having Club meetings that are fun and informative.

I am honored to have been elected as your President for this year and I am soliciting all members to provide comments, inputs, and suggestions, both positive and negative, to help our Club be the best it can be.

So, ride hard and be safe,

Your Prez,

**Eric Anderson**

2007 is looking like a great year. We had a fantastic turnout for the January 9th meeting, thanks to **Gary Thorson's** Presidential Proclamation in the January Hoofbeats and the calling of club members by **Carrie Russell**. We have elected a great team of new and used officers for CapitolRiders. I, for one, am committed to push for 2 primary objectives, much as in prior years. The first is to have fun and the second is to be safe & healthy. We are primarily a horseback riding and trail maintenance club, yet we can't always ride. So adding social and training activities will allow our club to become more rewarding and stronger. We have some surprising

Pot Lucks, another Playday, Breakfasts, Chili Dog Ride, Women's Campout, Seminars at the Club meetings for LNT, 10 Essentials, Packing, GPS, Hoof Prints to name a few. Best of all, we're going to have a record breaking year of rides and campouts. We'll be visiting new and old favorites like Green Mountain, Nile Valley, Keenes, Conrad Meadows, Kalama, Oregon Coast, Sedro Wooley off Highway 20, and Mt. Adams to name a few. We also may plan some scouting trips to find new trails and new camping areas.



L-R: Jeff LaBreck, Nancy Garred, Eric Anderson, Ritz Dechesne, Barry Russell

## Prices increasing to visit 'America the Beautiful'

Saturday, December 09, 2006

Prices increasing to visit 'America the Beautiful' By JEFF GEARINO -

Southwest Wyoming bureau

GREEN RIVER - Recreating in "America the Beautiful"

will cost more next year for people who buy annual passes for recreation areas on public lands, federal officials said. The Department of the Interior this week introduced its new "America the Beautiful: National Parks and Federal Recreation Lands Pass" for those federal recreation locations that have an entrance or standard amenity fee. Deputy Secretary of the Interior Lynn Scarlett said the new interagency pass will cost \$80 beginning Jan. 1.

Scarlett said the pass will provide a cost-effective and easy option for people who visit multiple federal recreation sites such as the Flaming Gorge National Recreation Area in southwest Wyoming, where a \$20 annual user fee for residents has been in effect for a decade.

"The family vacation to these destinations is an American tradition (and) visitors can now travel (from site to site) without getting a different pass," Scarlett said. "A sightseer in Utah, for instance, can view the majestic rock formations of Bryce and Zion National Parks and then explore the Flaming Gorge National Recreation Area ... using only one pass."

Officials said access to most federal public lands continues to remain free.

But critics of the fee hike, including Sen. Craig Thomas, R-Wyo., questioned the

program in 1997 to raise money for infrastructure improvements not funded through traditional means. Since its inception, the program has collected more than \$700 million nationally.

**EDITORIAL NOTE:** The following article was forwarded by Karen Johnson to alert us to a price increase in the new federal government "America The Beautiful" (\$80.00) pass. This pass replaces the former "Golden Eagle" (\$65.00) pass to gain access to various federal agency recreation sites. For full details please see [http://www.nps.gov/fees\\_passes.htm](http://www.nps.gov/fees_passes.htm)

Please note that this is not the same as the U.S. Forest Service's \$30.00 Northwest Forest Pass, which is what we need to have to use certain horse camps such as Kalama Horse Camp, etc. Please refer to <http://www.fs.fed.us/gpnf/04passes/>

You can use the "America the Beautiful" pass in lieu of the Northwest Forest Pass, but you can't use the NW Forest Pass to gain access to the other agency sites covered by the "America the Beautiful" pass.

Gary

high cost of the pass. "An \$80 fee is certainly higher than what folks should have to pay to recreate on federal lands," Thomas said. Thomas, the outgoing Senate Parks Subcommittee chairman, said he opposed expanding the recreation fee beyond the national parks to other federal land management agencies, which will result in higher fees with no guarantee of improving the impacted recreation sites.

"If there's a budget problem in our land management agencies, let's get to the root of it, address it head-on, and not put budget shortfalls on the back of recreational visitors," said Thomas.

Improvements Congress instituted the parks-only recreation fee demonstration

The Flaming Gorge NRA in southwest Wyoming was one of 47 sites selected by Congress in 1997 to implement a three-year user fee demonstration program. Congress has extended the pilot program five times since it began. The new pass was authorized by Congress in 2004 in a last-minute rider to an omnibus appropriations bill.

Federal officials said the pass combines the benefits of existing recreation passes - including the Golden Eagle, Golden Age, Golden Access Passports and National Parks Pass - from five federal agencies into one comprehensive pass.

"The interagency pass is a great New Year's gift both to the public lands and their visitors," said Agriculture Undersecretary Mark Rey. "Annual interagency pass revenue will benefit public lands by providing funds for maintenance, new visitor services and programs."

Rey said the 100 percent of the revenue derived from passes sold at federal recreation sites will directly benefit the selling agency. He said no less than 80 percent of the revenue will remain at the site where the pass was sold.

He noted several Wyoming projects funded with fee revenues, including the rehabilitation of the Yellowstone National Park Canyon Visitor Center and the construction of an accessible boardwalk at Medicine Bow-Routt National Forest.

To date, more than \$1.5 million has been collected in user fees at the 91-mile long Flaming Gorge Reservoir and recreation area located south of Green River,

*(Continued on page 3)*

After I lost Traveler, I did not feel I was ready to look for another horse. Several weeks later, however, Carrie found a horse for sale on line named "Arthur". I looked at the picture and said, "You don't think it could be the same Arthur we knew 10 years ago, do you?" But how many Tennessee Walking horses out there could be named "Arthur" ? We called and found out that he was the same horse we had admired 10 years ago when he was only 3. He'd had an excellent trainer, a beautiful gait and excellent manners, and was a lot more than

we could afford back then. In the past ten years, however, Arthur has passed through several owners and we both felt when we went to see him that we needed to "rescue" him. Not that he was being abused or underfed, he just hadn't been used or ridden at all for about 4 years, and was in need of shoes, grooming, and like all Tennessee Walkers, he needed a job in order to be happy. We knew what he was capable of and brought him home. He's really blossomed here, and we're finding that he remembers all his training and manners. He's a big horse with great speed and strength and the same wonderful gait, and also very gentle, calm, and has just a wonderful temperament. And same soft eyes we love. I can't replace Traveler because horses are like people--there are no two alike, there are no repeats. Arthur is bonding with us and will be loved for himself as our friend and companion. I'm looking forward to hitting those trails this year!



Arthur and Barry

(Continued from page 2)  
according to district officials.

The money has paid for improvements on 11 boat ramps, three visitor centers and 60 restroom facilities.

Federal officials called the new pass a bargain when compared to Parks Canada, which offers a family/group pass for around \$140.

But Thomas cited a recent University of Wyoming study, which showed the public had very little tolerance for a pass priced above \$70.

Following a competitive process, the land agencies contracted with the university's Survey and Analysis Center in May 2005 to collect and analyze data to assist in providing a basis for making a decision

on the price of a pass. The study looked at the potential revenue implications of different price levels.

The new pass covers recreation opportunities on public lands managed by four Department of the Interior agencies - including the National Park Service, Fish and Wildlife Service, Bureau of Land Management and the Bureau of Reclamation - and by the Department of Agriculture's U.S. Forest Service.

Officials said the new card replaces the four current passes, which will remain valid until expired or lost.

Southwest Wyoming Bureau reporter Jeff Gearino can be reached at 307-875-5359 or at gearino@tribcsp.com.



**President**

**Eric Anderson**  
**360-978-4087**

**Vice President**

**Barry Russell**  
**360-438-1873**

**Secretary**

**Ritz Duschesne**  
**360-438-1805**

**Treasurer**

**Nancy Garred**  
**360-352-9224**

**Director**

**Jeff LaBreck**  
**360-264-7901**

**Assistant Director**

**Karen Johnson**  
**360-273-8075**

**Newsletter Editor**

**Donna Thorson**  
**360-481-5963**

**Production Assistance**

**Capital Business  
Machines**





# OLYMPIA FARRIER SUPPLY


1041B 85<sup>TH</sup> AVE SE OLYMPIA, WA 98501

SHOES • NAILS • TOOLS • PADS  
DELTA HOOF CARE PRODUCTS AND **PONYW'AIR®**  
**(360) 786-6575**




**Heel First Landings, Inc.**  
**PAT WAGNER**  
AANHCP Certified  
Natural Hoofcare Practitioner  
& Field Instructor  
**360-790-4181**  
**360-446-8699**  
patslark@ywave.com

*Natural Hooves - Preferred by Horses, Recommended by NHC Practitioners*



**STEPHEN D. RUSSELL, D.D.S., P.S.**  
6344 LITTLEROCK RD. SW  
TUMWATER, WASHINGTON 98512  
**TELEPHONE 943-8182**  
**FAMILY DENTISTRY**




*Brandee Venable*  
Bookkeeper

Computerized Accounting Consulting Payroll & Taxes


(360) 956-3987  
Cell (360) 789-0554  
Fax (360) 956-1175  
email: bvenable@thurston.com

Classified Advertising Rates for Hoofbeats Newsletter	
<b>Business Cards</b>	<b>\$40 / year</b>
<b>1/4 Page</b>	<b>\$20 month / \$75 year</b>
<b>1/2 Page</b>	<b>\$45 month / \$135 year</b>
<b>Full Page</b>	<b>\$55 month / \$200 year</b>
<b>Classified ads, non-members</b>	<b>\$5 month</b>

Note: Ads must be paid to **Nancy Garred, Treasurer, 4036 - 107TH Ave SW, Olympia WA 98512** prior to being printed in newsletter.



Rosalie C. Blue  
Owner  
**3 2 1 0**  
Harborview Drive  
Gig Harbor  
Washington  
9 8 3 3 5  
**253.851.3277**  
POTTERY PAINTING STUDIO  
AND COFFEE LOUNGE



**PERFORMANCE EQUINE DENTISTRY**  
INC. P.S.  
**ADVANCED VETERINARY DENTAL CARE**  
**RICHARD L. VETTER, DVM**  
360-245-3476  
vetent@centurytel.net  
360-508-0083  
www.perfequinedentistry.com



# Horse Trailer Safety (16 of 23)

**16. I don't want to buy a full size truck to tow my horse trailer. I see people using sport utility vehicles and cars to pull their trailers. Is this OK?**

You may consider downsizing to a smaller vehicle as long as the vehicle is rated to tow the weight of your trailer with its full load. The weight of the horse(s) you will be hauling is the factor you cannot change in this combination.

If you are hauling one 900 lb. horse, you can purchase a lighter trailer and keep your weight down considerably.

If you have two 1500 lb. warm bloods, you cannot change the fact that you are hauling 3000 lbs. of horse no matter how much your trailer weighs. In addition, if you want a trailer that is strong enough to hold up to the extra wear and tear of such large horses, you should not have an extra light trailer.

This is like carrying bricks in a plastic bag - sooner or later the bricks will break the bag.

The wheelbase is usually shorter in a downsized vehicle, which makes it more important to install the proper hitch with weight distribution bars.

Because a lighter weight vehicle can be pushed by the trailer when stopping, or pulled out of control by a trailer sway, your trailer brakes must be in working order.

## Emergency Preparedness: Being Prepared During Times of Disaster. Important Tips for Horse Owners by Written by the AAEP

In the event of a disaster, your veterinarian knows how important it is for you as a horse owner to have pre-planned actions and proper information to make rapid decisions that may save your horse's and even your own life.

### ASSESS YOUR RISKS

What are the most likely disasters in your area? (flood, fire, tornado, hurricane, nuclear accident, disease

threat, chemical spill, ice storm, etc.)  
For each type disaster, check:

- What are your major vulnerabilities?
- What can you do to minimize the damage?
- What plans do you have in place?
- Who do you need to contact?

### BEFORE THE EVENT

- Take a careful look at your property and identify the best place for your animals in each type of disaster you consider.
- Prepare for the possibility you might want to evacuate.
- Check with your local veterinarian, law

*(Continued on page 9)*

*It is 5:38 p.m. this Sunday night (12/17/06) as I begin working on the February 2007 issue. Gary and I are without electricity now for Day 3 1/2 and it doesn't look like it is going to come back to us any time soon. I've had to make adjustments and rethink my daily tasks. Someone sent me the following, and since I'm in a reflective moment, I'm going to share it with you: As we grow up, we learn that even the one person that wasn't supposed to ever let you down probably will. You will have your heart broken probably more than once and it's harder every time. You'll break hearts too, so remember how it felt when yours was broken. You'll fight with your best friend. You'll blame a new love for things an old one did. You'll cry because time is passing too fast, and you'll eventually lose someone you love. So take too many pictures, laugh too much, and love like you've never been hurt because every sixty seconds you spend upset is a minute of happiness you'll never get back. Don't be afraid that your life will end, be afraid that it will never begin. Take care and thank you for being our friends — Your Editor*

# Featured Member:

## Rosalie Blue

I liked to be called Rosalie

(Family History) I was born and raised in Elma, WA. At the age of two yrs. I was given a shetland pony, "Coco." I rode him on a leadline with my mother walking beside. Then graduated to my mother riding her horse and Coco on a leadline. Sometime around four years I was soloing..... My grandmother, mother, aunt Prudy (Barry and Steve's mother) and I would go for late night rides by moonlight through the local woods and trails.....This was a very special time and the excitement was high.

At age twelve golf replaced horses. I was on the high school boys golf team. Played in many State and NW tourneys. After high school graduation, summer of golf, I headed for Arizona State U in "Clarabelle," my '49 Willeys Overland Jeepster. That was quite an adventure in itself. JoAnn (Gunderson) Carner and I were roommates and members of the girls college

golf team. I loved the desert terrain and weather. We could play anytime and not think of RAIN! After two years at ASU I transferred to U of Puget Sound/Tacoma. Less golf and more studies. My field of study was education, middle school.

After returning from Arizona, I met Rodger, who would become my husband a few years later. He was in Veterinary School at WSU. After graduation, we married in mid '62 and lived in San Diego for over 25 yrs. Our interest was sailing, we joined the SD Yacht Club. The kids (Kathleen and Randy) learned to sail and swim there. Kathleen is married and lives in Gig Harbor. She has a daughter Tayler, 15yr. Randy is married and lives in Eugene,OR. He recently became a first time father... son, Riley.

Rodger retired from practice in '88. We moved to Bend,OR and purchased 30 beautiful acres, a home with horse facility. Living 30 minutes from

the ski lodge was heaven. Skiing for 6 months and riding the other six..Wew! In '93 we divorced. I moved "home" to Olympia to be near relatives and old friends. My 3 yr. old Tenn.Walker, "T-Man" came with me. I joined Capital Riders to meet like-minded horse people. Mountain trail riding has been of great interest and challenge.

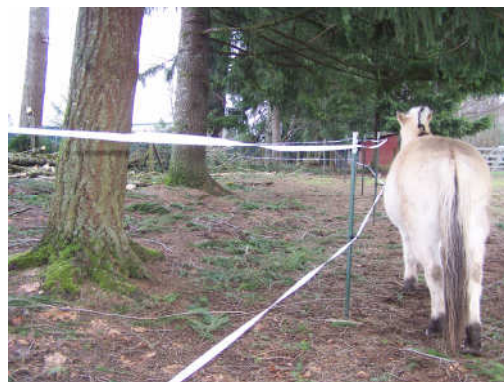
I started enrolling in horsemanship classes to improve my riding. This led to spending 10 months in Petaluma,CA going to "Horse School!" I learned a lot and learned how much I didn't know! I continue on this quest of improvement through seminars and classes. Alice Trindle of Haines,OR has become a valuable source of learning.

I currently own JAVA & CLAY CAFE , a contemporary pottery studio and coffee lounge in Gig Harbor. I live in Gig Harbor, on 5A with two horses, T-Man and Zovanni (Arab). Trail riding,

# "Riding the Storm Out"; the December 14, 2006, Wind Storm



Gary [Thorson] has decided he needs a new chain saw for Christmas. Our big old growth fir trees weathered the hurricane force winds OK. It was only an old half-rotten maple tree that came down. So, his long term plan is to take out the rest of the maple, and take out a few alder trees (weeds) each year to use for firewood. Might even have to buy a log splitter. Boys and their toys!



Gary sectioned off the downed tree.

Update  
12/25/06:  
Gary's  
Christmas  
present!  
(Perfect,  
isn't it?)



## Capitol Riders Subject-to-Change-At-Any-Moment 2007 Ride / Activity Schedule (changes in red)

Date	Activity and/or Location	Trail Boss, if applicable
Feb 24	9:00 a.m. Breakfast / JJ Norths	Carrie Russell
Mar 24	Potluck	Eric / Shellie Anderson
Apr 21	Trail Maintenance	Jeff LaBreck
May 12	Equine Dental Clinic / Trails End (filled)	Donna Thorson
May 13	Equine Dental Clinic / Trails End [Editor's note: A second equine dental clinic has been scheduled with the Veters to accommodate more horses]	Donna Thorson
May 19	Trail Maintenance	Jeff LaBreck
May 26-28	Memorial Day Ride / Nile	Carrie Russell
Jun 16	Trail Maintenance	Jeff LaBreck
Jun 16	Father's Day Ride / Kalama	Carrie Russell
Jul 20-22	Ride / TBD	Carrie Russell
Jul 21	Trail Maintenance	Jeff LaBreck
Aug 18	Trail Maintenance	Jeff LaBreck
Aug 24-26	Ride / TBD	Carrie Russell
Sep 3-4	Ride / TBD	Carrie Russell
Sep 15	Trail Maintenance	Jeff LaBreck
Oct 20	Trail Maintenance	Jeff LaBreck
TBD	Harvest Party / TBD	TBD
Dec	Holiday Party / TBD	TBD
TBD	Garage Sale / TBD	Ritz Duchesne

(Continued from page 5)

enforcement, animal control, or Ag extension agent for routes and recommendations.

- Find several alternative locations and check the entry requirements for each. Be sure to have agreements arranged for your animals in advance.

- Prepare an ID packet for each horse: age, sex, breed, color, registrations, unique ID's, photos, microchip numbers, etc.

- Write down any special feeding instructions; list any medications with dosage; record the name and phone number of your prescribing veterinarian.

- Be sure all vaccinations and medical records are in writing and up to date. Have current Coggins Test records. Consult your veterinarian for other recommended immunizations or tests.

- Take records with you. Records left at home may be damaged or destroyed during a disaster.

- Check for alternate water sources. Have fresh water and hay available for 48-72 hours.

- Keep trailers and vans well maintained and full of fuel.

- Keep insurance coverage current and adequate.

- Consider an event where you might be unable to save/evacuate all your animals. Make a priority list. Familiarize family and farm personnel with the list in case you are not there when the disaster occurs.

Prepare an emergency kit for a minimum of 72-hour care:



- ✓ · Plastic trash barrel with lid
- ✓ · Tarpaulins
- ✓ · Water buckets
- ✓ · First aid items
- ✓ · Betadine or Nolvasan solutions
- ✓ · Antibiotic ointment
- ✓ · Gauze squares and bandages
- ✓ · Ichthammol ointment (feet)
- ✓ · Tranquilizer injections (optional)
- ✓ · Eye ointment
- ✓ · Portable radio, flashlight and extra batteries
- ✓ · Fire resistant, non-nylon leads and halters
- ✓ · Knife, scissors, wire cutters
- ✓ · Duct tape
- ✓ · Livestock markers or paint
- ✓ · Leg wraps
- ✓ · Lime and bleach/disinfectant

### DEVELOP A BUDDY SYSTEM

Talk with a neighbor or friend; make arrangements to check on each other after a disaster. Tell one another if you are evacuating and to where, so authorities will know. Buddies may agree to pool resources, such as generators, water tanks, trailers, etc.

Permanently identify each horse by tattoo, microchip, brand, tag, photographs (front, rear, left and right side) and/or drawing. If disaster strikes before you can do this, paint or etch hooves, use neck or pastern bands, or paint your telephone number or last four digits of SSN on the side of the animal.

### PRACTICE YOUR PLAN

When disaster strikes remain calm and follow your plan! Remember it is vital to be able to leave early in any mandatory evacuation to avoid getting stalled in traffic and create unnecessary hardships.

### AFTER AN EVENT

- Notify family, friends and officials that you are OK, whether you stayed or evacuated. Use phones, radios, Internet, signs, or word of mouth.

- Inspect your premises carefully before turning out horses. Look for foreign materials (tin, glass, nails) and downed fences or power lines.

- Be careful leaving your animals unattended outside. Familiar scents and landmarks may be altered, and your horses could easily become confused and lost.

- Check with your veterinarian or State Veterinarian's office for information of any disease threats that may exist because of the situation.

- If you find other horses, use extreme caution in handling, and work in pairs if possible. Keep the horse contained and isolated, and notify authorities as soon as possible.

- If any horses are lost, contact local authorities. **BE PREPARED TO IDENTIFY AND DOCUMENT OWNERSHIP WHEN CLAIMING LOST HORSES.**

- Listen to the emergency alert system (EAS) for information about locating lost animals.

## Public Land Managers Meeting: December 1, 2006

1. Bob Gish opened the meeting by introducing the Public Land Managers from the USFS, WSDNR and WSParks. The BCHW Directors present then introduced themselves.
2. Brad Tuininga from Alliance for Wilderness Education and Stewardship gave a presentation on preserving the National Wilderness by bringing groups together on a big Trail Project in the Frank Church Wilderness in Idaho with USFS and BCH of Idaho.
3. Methow USFS reported on the damage that the Tripod and Tatoosh Fires did to 147 miles of trail. BCHW Volunteer Hours will be critical to obtain Grant Monies and to do the repair work.
4. Natchez USFS reported that a lot of work was done on the White Pass Horse Camp. It is not finished but getting closer to its vision.
5. Snoqualmie USFS reported that the bulk of their work last summer was on the Pacific Crest Trail.
6. Mt. Baker/Snoqualmie USFS reported on the November flood damage. They had 10 bridges washed out, 55 damaged road sites and 50 damaged trail sites.
7. Wenatchee USFS reported that they logged out about 600 miles of trail with 400 of it done by a contractor. They are rerouting the Little Wenatchee Trail and putting in a turn around at the trailhead.
8. Cle Elum USFS reported that they have their own pack string and do a lot of packing in the summer. The ability to pack has helped them be competitive for grants because they can support other groups. They logged out about 700 miles of trail in 2006 and will need BCHW help in 2007 because they do not have a non-motorized, non-wilderness grant for 2007.
9. WA State Parks reported that Parks will increase Equestrian usage. Nisqually-Mashel is a new park that will have Equestrian opportunities. Other projected facilities are a new park by Sequim, a new facility at Banks Lake, Columbia Plateau Trail, Columbia Falls facilities, Beacon Rock and Pearrygin Lake with 13 camp sites and a new trailhead with a good turn around.
10. WA State DNR reported on Budget issues and their stance on many land related issues. They have 85 campgrounds, 65 trailheads and 470 miles of non-motorized trails statewide. They are making a budget request this year for money specifically earmarked for access and renovation of DNR managed lands. The DNR Land Exchanges are very important for future management. It will consolidate land into larger blocks similar to Capitol Forest, and be more economical to manage.
11. USFS talked about the Closed Unless Posted Open designation. Comments on favorite usage spots should be conveyed to USFS to be included in their plan. Get involved in the process.
12. Bob Gish adjourned the meeting at 3:30 pm. A very informative meeting this year.

**Jeff LaBreck**  
Director

# Minutes from the January 9, 2007 Meeting

The meeting was called to order by **Gary Thorson** at 7:15 PM at our new location at the Littlerock Fire House on Littlerock Road. There were 25 members and 4 guests present to start off our new year.

The minutes from the November 1, 2006, meeting were approved as published.

**Treasurer's Report: Nancy Garrad** reviewed the bank account activity for the past two months. There were two BCHW 2007 calendars still available for sale. These were sold at the meeting. **Nancy** indicated that the club has already paid BCHW for their portion of the calendars.

**Nancy** indicated there were still some outstanding debts from the auction at the Harvest Party. **Joyce Nelson** stated she had a list of who owes what. She also brought the remaining items in to auction off tonight.

**Director's Report: Jeff LaBreck** asked for all members to complete the Economic Survey if they haven't already done so. If the club is interested in submitting pictures for the 2008 BCHW calendar, he will get the format needed. Please bring pictures to the next meeting or send digital pictures to **Gary Thorson**.

**Christine Redmond** and **Kevin Olson** from DNR will come to the February meeting (2/13/07) to present information about the new DNR budget. DNR is attempting a new approach to funding for trail work.

Leadership meetings will take place in Cle Elum on January 20<sup>th</sup>. This consists of a general membership meeting and classes on the various club positions. This is an all day affair. **Jeff** and **Ritz** will attend and **Jeff** encourages all officers of Committee chairpersons to attend. **Eric** and **Barry** will check their calendars to see if they can make it.

## Committee Reports:

**Trail Maintenance: Jeff** suggested we establish a standard weekend every month to do trail maintenance. So, from April to October, the 3<sup>rd</sup> Saturday of every month will be a trail maintenance weekend.

**Events: Carrie Russell** has been talking with members about events and education. Here is a list of dates and events:

- ✓ **February 24th:** Meet for breakfast at J J North's at 9:00 AM. This is an

opportunity to meet and talk with other members

- ✓ **March 24th:** Pot Luck dinner at the Anderson's in Onalaska.
- ✓ **April 21st:** Trail maintenance in Capitol Forest and the Chili Dog Ride
- ✓ **May 26<sup>th</sup> to May 28th:** Memorial Day Weekend Campout to Nile Valley
- ✓ **June 16<sup>th</sup> to 17th:** Father's Day Campout at Kalama
- ✓ **July 20<sup>th</sup> to July 22nd:** Weekend Ride – location to be determined
- ✓ **August 24<sup>th</sup> to August 26th:** Campout – location to be determined
- ✓ **September 1<sup>st</sup> to September 3rd:** Labor Day Campout – location to be determined

**Carrie** asked for suggestions on dates for the Women's Ride as well as suggestions for day rides, beach rides and other locations to be considered. **Carrie** is willing to take over as chairman of the Events Committee. She will work with **Karen Johnson** on this.

Suggestions she received for meeting activities include: trail etiquette, Leave No Trace, items to carry when you trail ride. If you have other suggestions, please get them to **Carrie** or **Dean**.

**Education: Dean** let everyone know that BCHW will do their day long program on Leave No Trace. This will be at the old Forest Service building in Randal. Capitol Riders will send **Steve Russell** to the program and he will present his newly acquired education to the club at a meeting later this year.

At the February meeting, DNR will present their budget plans. At the March meeting, **Ken** will present Back Country Survival.

**Newsletter: Donna** said she sold another ad to Kiperts for the newsletter. She has verified that a member of Capitol Riders is eligible for a discount on trailers. **Donna** also requested bios on members.

The **Vetter's** will be at Trails End on May 12<sup>th</sup>. All slots are full at this time. However, if you want to get on a waiting list, let **Donna** know.

**Ways and Means: Joyce** auctioned off the remaining items from the Harvest Party for

\$10. The Garage Sale was a big success last year. **Ritz** volunteered to host this year's Garage Sale. A date will be determined later.

**Hoofprints Program: Jeff** reminded all the members that now is the time to sign up for the Hoofprints Program. It costs \$5 to join. You then track any miles/hours (we generally use 4 miles per hour) you ride for the year at someplace other than an arena or at your home. You will turn in the sheets to Jeff. In December, you will receive a \$15 gift certificate to Tack Room Too.

The value of tracking your miles allows us to show DNR that the trails are being used by horsemen and women.

**Old Business: Gary** called for validation and approval from the membership for the following officers and Committee chairs:

- ✓ President: **Eric Anderson**
- ✓ Ways & Means: **Joyce Nelson**
- ✓ Vice President: **Barry Russell**
- ✓ Education: **Dean Hartman**
- ✓ Treasurer: **Nancy Garrad**
- ✓ Trail Maintenance: **Jeff LaBreck**
- ✓ Secretary: **Ritz Duchesne**
- ✓ Historian: **Gary Thorson**
- ✓ Hoofprints: **Jeff LaBreck**
- ✓ Social Events: **Shelley Anderson**
- ✓ Trail Rides: **Carrie Russell / Karen Johnson**

The Club thanks all who volunteered to fill a position.

**Gary** will send the Club's By Laws and Committee structures to all the new officers.

**New Business: Tom Crowson** will work with **Dean** to circulate information about BCHW Legislative Day, scheduled for Thursday, February 8<sup>th</sup>. If you are interested in participating, please call **Tom**.

**Treats for the Next Meeting: Joyce Nelson** and **Tootie Crowson**

Meeting was adjourned at 8:30.

**Ritz Duchesne**, Secretary



**Headline  
from the  
December  
15th, 2006  
The  
Olympian**

**BCHW Legislative Day; February 8, 2007**

BCHW Legislative Day 2007

Dust off your boots and brush your cowboy hats. BCHW Legislative Day is February 8th, 2007.

With only a couple members from relatively few

Here is a message that I received from the Nisqually Chapter. I would also like to stress the importance of a large BCHW presence. As we all know the lawmakers take notice to the numbers of participants and this year we are hoping for 100 attendees. Since Capitol Riders is located here, it seems that we are in a perfect position to really have a presence this year. I attended last year and found it to be a good experience. I would encourage any and all members to try to fit this into their schedule. Thanks. Jeff LaBreck, Director

chapters, last year we had a solid 50 BCHW members walking the halls of our State Capitol. Up from the previous year of - 10.

Basically, we fill the Capitol halls in

the AM, attempting to speak with our respective representatives, have lunch and discussion, and then re-fill the halls until mid afternoon.

I found last year, that I didn't need to be well versed on our issues. Most of our attendance was to make a showing of our forces and gain attention from our elected officials.

Please try to be available on the 8th and attend.

Louise

**Request From Your Director, Jeff LaBreck**

Also could you please put in a little blurb about the importance for some of our members to go to the Leadership conference on January 20, 2007 in Cle Elum.

This will be my fourth year of

attending and I have gotten positive benefits from them all. I feel it is very important that all the Officers and any other interested members should go. As each year passes the need for member involvement gets more important.

If the Horse Community does not get involved and make a loud voice, we will be unceremoniously buried by those who feel we are an insignificant inconvenience in their grand plan.

## Directors' Board Meeting: December 2, 2006

1. Meeting called to order and a roll call taken to establish a quorum at 9:05 am by Bob Gish.
2. Jim Hutchins gave a presentation on the WA State Horse Park they are trying to build near Cle Elum. They are going to the Legislature to try to obtain funding to get the project going. They need more membership in their organization and letters written to Legislators in support of the Horse Park.
3. Brad Tuininga gave his presentation on the Frank Church Wilderness Trail Project to the Directors.
4. Bob Brooke stressed the dire need for an active and effective Legislative Chair from each Chapter. February 8, 2007 will be our Legislative Day in the Columbia Room at the Capitol. We need all the members present at this event that can possibly be there to show an Equine strength of numbers. We are hoping for a showing of 100 members for the 2007 Legislative Day. Let us all get involved.
5. The Legislative Group will play a big role in the organization of the VIP Rides.
6. The Rocky Mountain Elk Foundation gave a presentation on Elk Habitat Critical Areas. This presentation dealt with the importance of blocking up the DNR Lands and getting rid of the checkerboard ownership to preserve and keep the habitat out of development. If DNR can not block up large tracts over 10,000 acres, then development value would overshadow resource value and they might have to sell some of the land. The Elk Foundation needs the support of BCHW members.
7. Jeff Chapman of Buckhorn Range Chapter reported on the USFS options for reducing their backlog of maintenance and to bring facilities management to a level that their budgets will cover.
8. A USFS study showing National Forest useage by Equines to be 1% nationally. With this low rate, very little consideration will be given to horse useage when making cost cutting decisions.
9. Each chapter should have an active Public Lands Committee to keep track of changes and issues.
10. Trygve Culp of Okanogan Valley Chapter talked about expanding our Public Lands involvement in all levels of government, Federal, State and Local.
11. Bob Gish appointed Wanda Holloway as committee chair for deciding what records to keep and put together a retainage schedule.
12. Jane Byram reported on the LNT Program. It is out of money and the Nisqually Chapter donated \$100 for 2007 and challenged all the other chapters to do the same. Jane will rewrite the LNT Grant. More members should participate in LNT Training as it is an ongoing study.
13. Mike Reedy reported that the Right to Ride Bill has had a name change and has a good chance of passing in 2007. BCHA is going to raffle a \$45,000 Pickup for \$100 per ticket, hoping to sell 1000 tickets. The Legal Defense Fund is depleted and needs to be built back up with donations.
14. Jane Byram talked about the importance of going to the Washington Trails Coalition Conference the next time to increase the level of equine participation.
15. A motion was passed to keep the calendar price at \$10 next year with no member discounts.
16. Dan Chappel reported that Rattlesnake Ridge Riders Chapter donated \$300 to the VIP Ride Fund and challenged the other chapters to make a donation. Other Chapters have also made donations.
17. Bob Gish said that it was still important to turn in the economic Surveys as they will show the Equine Economic impact to our State's Economy, which could influence decision making.
18. It was voted to participate as an exhibitor at the Ride the West Event in Spokane in 2007.
19. It was voted to have the 2007 General Membership Meeting at the Monroe Fairgrounds at 9:00 am, June 2, 2007. A meeting to plan this will be at Leadership, January 20, 2007 after classes end.
20. Bob Shonka was nominated and elected as our new BCHA Director for the next term.
21. A standing ovation was given to Jo Dasso for all her past work on The Trailhead News.
22. The meeting was adjourned at 2:00 pm by Bob Gish. A productive and timely meeting.

**Jeff LaBreck** , Director

# From this week's Kittitas County Daily Record: Cle Elum horse park funds earmarked for 2007 \$3.8 million set aside in governor's budget By MIKE JOHNSTON

Gov. Chris Gregoire's budget proposal to the 2007 state Legislature contains a request for more than \$3.8 million for the first phase to create a Washington State Horse Park near Cle Elum.

Mitch Williams of Elensburg, a state Horse Park Authority Board member, said if the request survives the legislative process, initial construction could start sometime next year.

"The budget request also is very significant because, if it is finally approved, the land set to be donated for the park will be formally transferred to the authority board," Williams said Wednesday. "We'll then be off and running." Suncadia, the resort in Upper County, has committed to donate 106 acres for the statewide equine park in Cle Elum's urban growth area. The site is west of Cle Elum on the north side of the westbound ramp to Interstate 90.

The land donation, and donations of work to bring water and sewer service to the site, are estimated to value at least \$6 million.

The 2007 state funds would be used for the project's first phase:

Here is some information on the proposed WA State Horse Park that they are trying to put in near Cle Elum. This may be of interest to the membership.

Thanks.

Jeff

completion of design, development and engineering, and then obtaining permits. It also will allow for site clearing, road grading and improvements for water, sewer and power.

In addition, the state capital budget appropriation will lead to construction of an outdoor arena.

"This is the culmination of many, many years of volunteer work to make the dream of a state horse park a reality," Williams said. "It's a great opportunity for the state, for Eastern Washington and for businesses in Kittitas County."

A recently completed economic impact study by Central Washington University's Economics Department estimates that operations at the park, once all phases are completed, will annually generate \$8 million in local business revenue, Williams said.

It also has the potential of creating the equivalent of 144 jobs in the local area due to the increased business activity sparked by the park.

The estimated \$15 million project will seek future state funds and private donations to complete

other phases in the coming years: construction of a large, indoor covered arena, four warm-up arenas, a multi-purpose field, 400 indoor horse stalls, a combination maintenance and manure management facility, administration office, a multi-use event course, parking and RV hookup spaces.

State Rep. Bill Hinkle, a Republican from Cle Elum and a horse park authority board member, said he worked with the governor's budget staff, along with many other park supporters, to get the appropriation placed in the governor's budget.

Hinkle said the funding has a good chance for final approval if it is made clear that the park, run by a public authority, will benefit the entire state.

He said a past study has shown that an estimated \$1.5 billion in equine industry-related spending by state residents, groups and businesses takes place annually outside the state.

"We want to show that this horse park will be able to capture some of that spending right here in our own state," Hinkle said. "Right now we are seeing that the equine industry just keeps growing and growing."

## 2006 Volunteer Hours Wrap Up

**Volunteer Hours** participation for FY2006 was productive and encouraging. Capitol Riders had 38 members that participated in Volunteer Work. Our Chapter has increased the **volunteer hour** participation steadily the last four years by both doing more work and keeping better accounting of the work being done. The **Volunteer Hours** totals for the four years were: 2003 – 255 hrs, 2004 – 1150 hrs, 2005 – 1884 hrs and 2006 – 3153 hrs.

During the year our members participated in many different ways.

We started with the Public Land Managers meeting, our Event Planning meeting and BCHW Leadership.

We did winter Trail Maintenance and had Articles published in NW

Horse Source. Members organized and participated in the Graveling Work Party with Pack Stock as well as several DNR sponsored work parties.

Our Chapter organized and put on the annual BCHW Auction. Successfully, I might add.

As the year progressed we helped with Benefit Rides, participated in Search and Rescue and Mounted Patrol, rebuilt the fifth Horse Corral at Mima Campground and did normal trail maintenance and clean up.

Our challenge for 2007 will be to encourage even more member participation and to maintain our level of accomplishment.

For 2004 and 2005 the Volunteer Commendation Award winners

were easily determined. 2004 – **Donna Thorson** and 2005 – **Joyce Edin**. Both of these ladies did and continue to exemplify volunteer work participation.

It was not that clear cut in 2006 which meant we needed two recipients. Those two well deserving members were **Ed Haefliger** and **Cindi Shue**. Both of these folks put forth a very large outlay of effort throughout the year.

I would like to take this opportunity to congratulate the two VolCom winners and to thank each Chapter Member for their participation in our **Volunteer Program**. Good job.

**Jeff LaBreck**  
Volunteer Hours Coordinator

## Winter Weather - What About the Horse? *The Horse Review* By Dr. Hamilton



There are several "extra" considerations when it comes to your horse's well being/survival during very cold winter weather. It is important to take special precautions because it is much easier (and cheaper) to **think ahead** than react after the fact. The age of the horse, does he normally live in or out, has he been clipped, are there automatic waterers or buckets... all factor into the winter equation. When you go to feed the horse on that ever-so-cold day, keep in mind that a large portion of the energy that is consumed will go to heating the body so, a higher dietary energy content is important. Another

consideration is adequate water consumption. Studies have shown that if the water is warmed up, the amount consumed by the horse is **much** higher. Therefore, work several water changes into the schedule to promote more drinking. Any horse vet will tell you that most colics during the winter are impaction/constipation colics which, in large part, are due to poor water intake - a little extra labor now is much cheaper than the vet bill later!

If your horse lives out a lot, then construction of a run-in shed (wind break) should be top priority. During

heavy snow, the shed provides the only dry place in which to sleep - make sure to find a level spot in the field and face the opening to the south for maximum sun. The shed is a good place to feed and, if designed with a gate across the open side, you can close the animal in on the worst of days.

There are many horse owners who boast of their animal's "thick skin", their amazing tolerance of a frigid environment. One can only wonder how that judgment is made. Hopefully the criteria is something other than survival!

## Treats for February

Joyce Nelson  
Tootie Crowson

## February Birthdays



8—Danise Parrish

## 2007 Capitol Riders Meeting Schedule

All meetings are the second Tuesday of the month, 7:00 p.m.,  
**Little Rock Fire Department**  
10828 Little Rock Road SW  
Olympia WA 98512

January 9, 2007

July 10, 2007

**Feb 13, 2007**

Speaker: Christine Redmond, DNR

August 14, 2007

**March 13, 2007**

Speaker: Ken Parrish

September 9, 2007

April 10, 2007

October 13, 2007

May 8, 2007

November 13, 2007

June 12, 2007

December 11, 2007



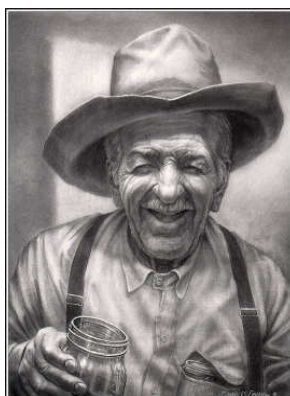
## Capitol Riders

D. J. Thorson  
Editor, Hoofbeats  
3020 Sapp Road SW  
Tumwater WA 98512

Phone: 360-481-5963  
Email: thorsondj@comcast.net

[www.bchw.org](http://www.bchw.org)

Backcountry Horsemen  
of Washington



Light travels faster than sound. This is why some people appear bright until you hear them speak

